

Racores JIC 37°

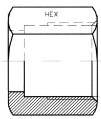
Raccord JIC 37°

Flare fittings JIC SAE JS 1431

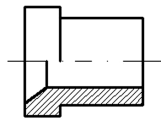
Bördelverschraubungen JIC nach SAE J 514 37°

DICSA

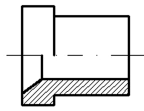
Tuercas y Féculas/Écrou et Férules/Nut and Sleeves/Überwurfmuttern und Druckring



ZS110
Page 221

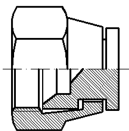


ZS120
Page 222

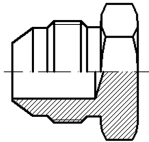


ZS121
Page 223

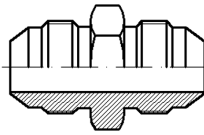
Uniones Rectas JIC/Union Droite JIC/JIC Straight Union/JIC Gerade Verschraubungen



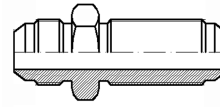
ZS130
Page 224



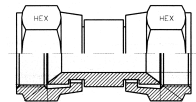
ZS140
Page 225



ZS260
Page 226

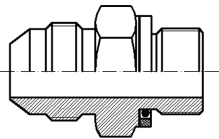


ZS250
Page 227

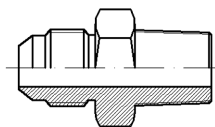


ZS730
Page 228

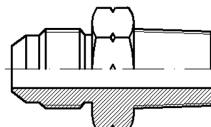
Uniones JIC Rosca/Unions JIC/JIC Straight Adapter/Gerade Einschraubverschraubungen



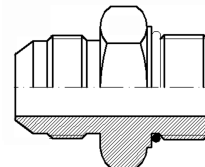
ZS230
Page 229



ZS210
Page 230

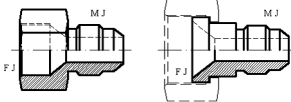


ZS200
Page 231

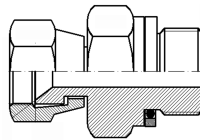


ZS240
Page 232

Uniones Macho-Hembra/Union Mâle-Femelle/Male-Female Union/Übergangsstück

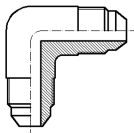


ZS290
Page 233

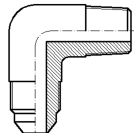


ZS180
Page 234

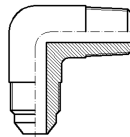
Codos JIC-Rosca/Coudes JIC/JIC Elbows/90° Bogen



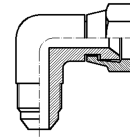
ZS500
Page 235



ZS550
Page 236

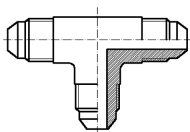


ZS525
Page 237

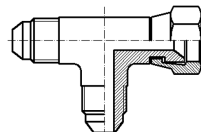


ZS675
Page 238

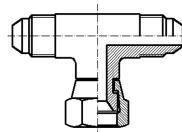
Tes JIC-Rosca/Tés JIC/JIC Tees/T-Verschraubungen



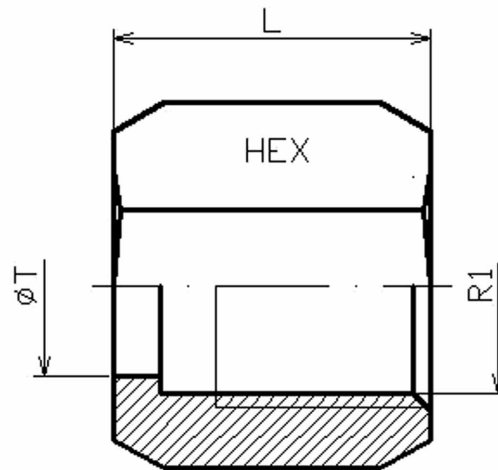
ZS505
Page 239



ZS680
Page 240



ZS685
Page 241



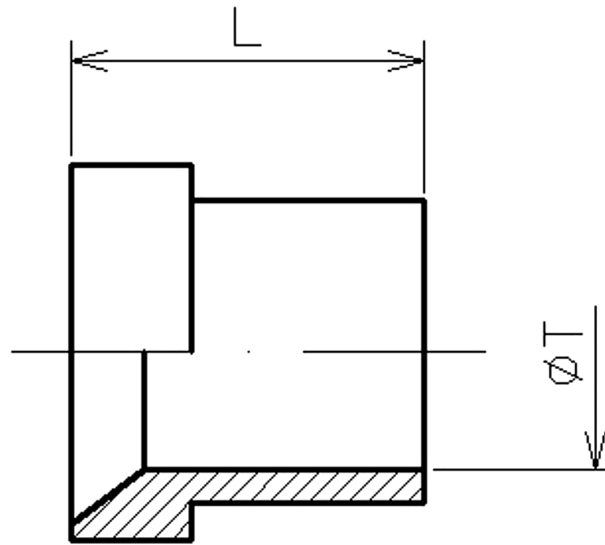
Referencia Référence Part N°. Bestell N°.	Rosca Filetage Thread Gewinde	Tubo Tube Pipe Rhor	Dimensiones Dimmensions Dimensions Masszahlen						
	R1	ØT	L	L1	L2	A	C	D	HEX
ZS11006	7/16"	20h UNF	7,72	15,5					14
ZS11008	1/2"	20h UNF	9,47	17					17
ZS11010	9/16"	18h UNF	11,15	18,5					19
ZS11012	3/4"	16h UNF	14,43	21,5					22
ZS11016	7/8"	14h UNF	17,68	24,5					27
ZS11020	1" 1/16	12h UN	21,13	26					32
ZS11025	1" 5/16	12h UN	27,61	28,5					41
ZS11032	1" 5/8	12h UN	34,14	31					50
ZS11038	1" 7/8	12h UN	41	36					60

Ferula JIC 37° (anillo) Tubo métrico

Cutting Ring JIC 37°
Metric Tube

Feroules JIC 37° pour Tube Metrique

Druckring (Stützring) Metrisch



Referencia	Rosca	Tubo	Dimensiones						
Référence	Filetage	Tube	Dimmensions						
Part N°.	Thread	Pipe	Dimensions						
Bestell N°.	Gewinde	Rhor	Masszahlen						

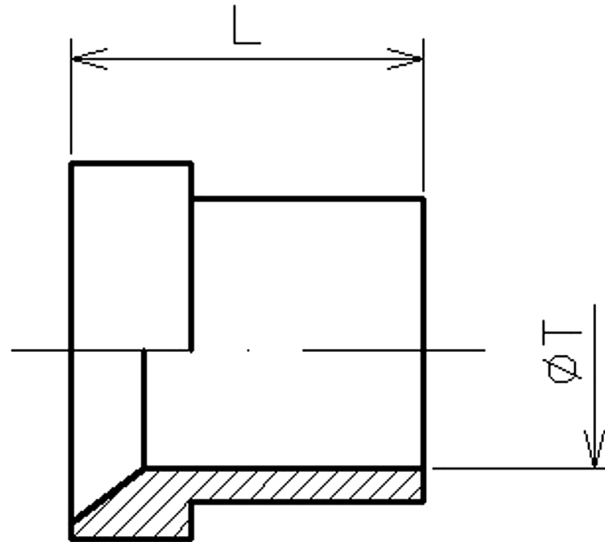
	R1	ØT	L	L1	L2	A	C	D	HEX
ZS12006		6,15	10,5						
ZS12008		8,15	11,5						
ZS12010		10,15	12,5						
ZS12012		12,15	14,5						
ZS12014		14,20	17						
ZS12015		15,20	17						
ZS12016		16,20	17						
ZS12018		18,20	17,5						
ZS12020		20,20	17,5						
ZS12025		25,20	19,5						
ZS12030		30,20	23						
ZS12032		32,30	23						
ZS12038		38,40	28,5						

Ferula JIC 37° (anillo) (Tubo Gas)

Cutting Ring JIC 37° (Gaz Pipe)

Ferroules JIC 37° (Gaz Tube)

Druckring (Stützring) (Gaz Rohr)



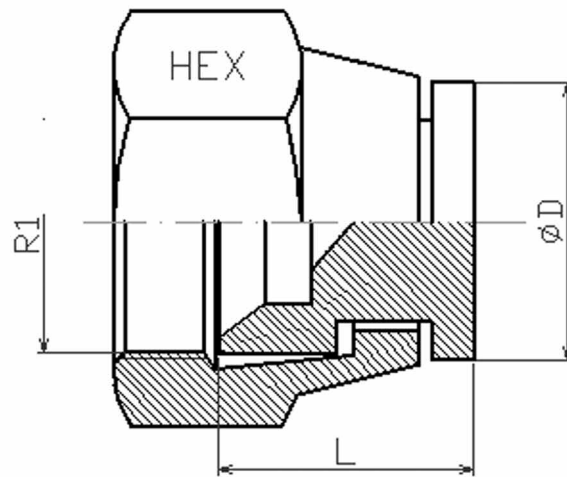
Referencia <i>Référence</i> Part N°. Bestell N°.	Rosca <i>Filetage</i> Thread Gewinde	Tubo <i>Tube</i> Pipe Rjpr	Dimensiones <i>Dimensions</i> Dimensions Masszahlen									
			R1	ØT	L	L1	L2	A	C	D	HEX	
ZS12106		1/4"		10,5								
ZS12108		5/16"		11,5								
ZS12110		3/8"		12,5								
ZS12112		1/2"		14,5								
ZS12114		5/8"		16,5								
ZS12115		3/4"		17								
ZS12116		1"		19,5								
ZS12118		1"1/4		23								
ZS12120		1"1/2		28,5								

Tapón Hembra Giratoria JIC 37°

JIC 37° Plug Female

Bouchon Femelle JIC 37°

Verschlußstopfen



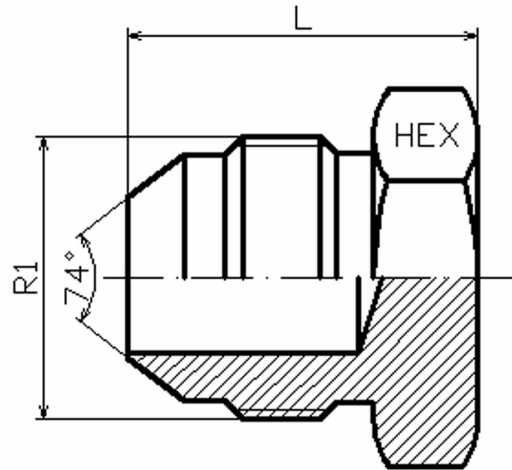
Referencia Référence Part N°. Bestell N°.	Rosca Filetage Thread Gewinde	Dimensiones Dimensions Dimensions Masszahlen							
		R1	L	L1	L2	A	C	D	HEX
ZS13006	7/16" 20h UNF		9					12	
ZS13008	1/2" 20h UNF		10,5					12	
ZS13010	9/16" 18h UNF		13					15	
ZS13012	3/4" 16h UNF		15					19	
ZS13016	7/8" 14h UNF		15,7					20	
ZS13020	1" 1/16 12h UNF		17					26	
ZS13025	1" 5/16 12h UNF		18					32	
ZS13032	1" 5/8 12h UNF		19					40	
ZS13038	1" 7/8 12h UNF		24					48	

Tapón Macho SAE - JIC 37°

Plug Male SAE - JIC 37°

Bouchon Mâle SAE JIC 37°

Verschlussstopfen



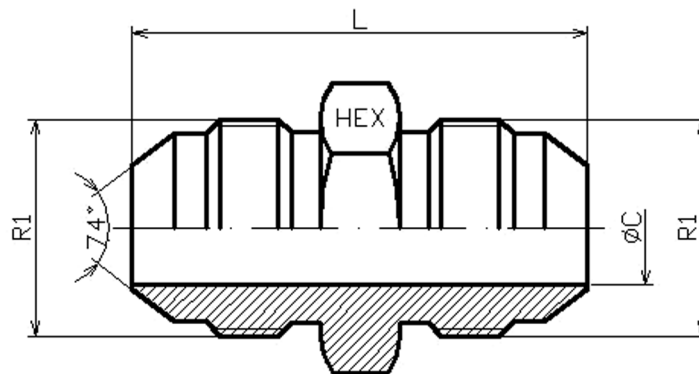
Referencia <i>Référence</i> Part N°. Bestell N°.	Rosca <i>Filetage</i> Thread Gewinde		Tubo <i>Tube</i> Pipe Rhor		Dimensiones <i>Dimensions</i> Dimensions Masszahlen					
	R1		B	L	L1	L2	A	C	D	HEX
ZS14006	7/16"	20h UNF	6	20,5						14
ZS14008	1/2"	20h UNF	8	20,5						17
ZS14010	9/16"	18h UNF	10	21,5						17
ZS14012	3/4"	16h UNF	12	24						19
ZS14016	7/8"	14h UNF	14,15,16	28						24
ZS14020	1" 1/16	12h UNF	18, 20	32,5						27
ZS14025	1" 5/16	12h UNF	25	34						36
ZS14032	1" 5/8	12h UNF	30, 32	37						46
ZS14038	1" 7/8	12h UNF	38	42						50

Adaptador Macho-Macho SAE - JIC 37°

Adapter Male SAE - JIC 37°

Adaptateur Droit Mâle SAE JIC 37°

Gerade Verschraubung AGJ - AGJ



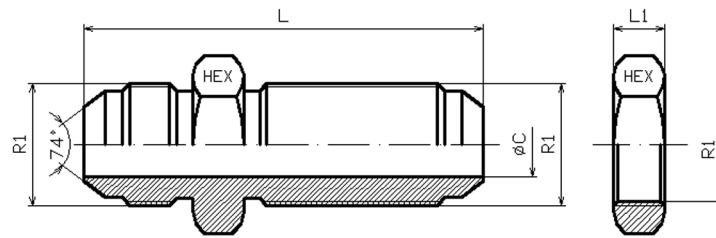
Referencia <i>Référence</i> Part N°. Bestell N°.	Rosca <i>Filetage</i> Thread Gewinde	Tube <i>Tube</i> Pipe Rhor	Dimensiones <i>Dimmensions</i> Dimensions Masszahlen						
	R1	B	L	L1	L2	A	C	D	HEX
ZS26006	7/16"	20h UNF	6	34,5			4		14
ZS26008	1/2"	20h UNF	8	34,5			6		14
ZS26010	9/16"	18h UNF	10	36			7,5		17
ZS26012	3/4"	16h UNF	12	40			10		22
ZS26016	7/8"	14h UNF	14,15,16	47,6			12		24
ZS26020	1" 1/16	12h UNF	18, 20	55			15		30
ZS26025	1" 5/16	12h UNF	25	57			20		36
ZS26032	1" 5/8	12h UNF	30, 32	61			26		46
ZS26038	1" 7/8	12h UNF	38	70			33		55

Pasatabiques SAE - JIC 37°

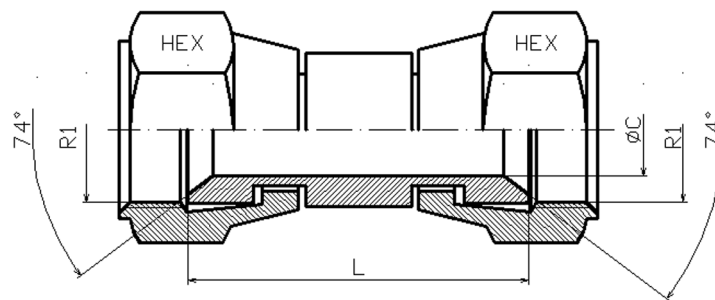
Bulkhead with Nut SAE - JIC 37°

Union Passe Cloison Droit Mâle SAE JIC 37°

Schott Verschraubung



Referencia <i>Référence</i> Part N°. Bestell N°.	Rosca <i>Filetage</i> Thread Gewinde	Tubo <i>Tube</i> Pipe Rhor	Dimensiones <i>Dimmensions</i> Dimensions Masszahlen						
	R1	B	L	L1	L2	A	C	D	HEX
ZS25006	7/16" 20h UNF	6	52,5	6			4		17
ZS25008	1/2" 20h UNF	8	52,5	6,5			5,5		19
ZS25010	9/16" 18h UNF	10	55,5	7			7,5		22
ZS25012	3/4" 16h UNF	12	62,5	7,5			10		24
ZS25016	7/8" 14h UNF	14,15,16	69	9			12		30
ZS25020	1" 1/16 12h UNF	18, 20	78,5	11			15		36
ZS25025	1" 5/16 12h UNF	25	80,5	11,5			20		41
ZS25032	1" 5/8 12h UNF	30, 32	84	12			27,5		50
ZS25038	1" 7/8 12h UNF	38	89,5	12			33		55

Adaptador Hembras Giratorias SAE - JIC 37°*Adapter SAE - JIC 37° Swivel Female**Adaptateur Femelle Tournante SAE - JIC 37°**Gerades Zwischenstück mit JIC Muttern*

Referencia	Rosca	Tube	Dimensiones						
Référence	Filetage	Tube	Dimensions						
Part N°.	Thread	Pipe	Dimensions						
Bestell N°.	Gewinde	Rhor	Masszahlen						

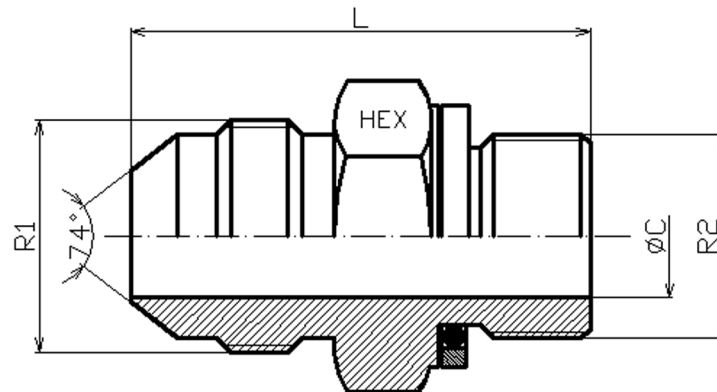
	R1		B	L	L1	L2	A	C	D	HEX
ZS73006	7/16"	20h UNF	6	21				4		14
ZS73008	1/2"	20h UNF	8	23				4		17
ZS73010	9/16"	18h UNF	10	25				6		19
ZS73012	3/4"	16h UNF	12	28				10		24
ZS73016	7/8"	14h UNF	14,15,16	30				12		27
ZS73020	1" 1/16	12h UNF	18, 20	33				15		32
ZS73025	1" 5/16	12h UNF	25	36				22		41
ZS73032	1" 5/8	12h UNF	30, 32	40				26		50
ZS73038	1" 7/8	12h UNF	38	45				32,5		55

Adaptador Macho SAE - JIC 37° - Macho BSP

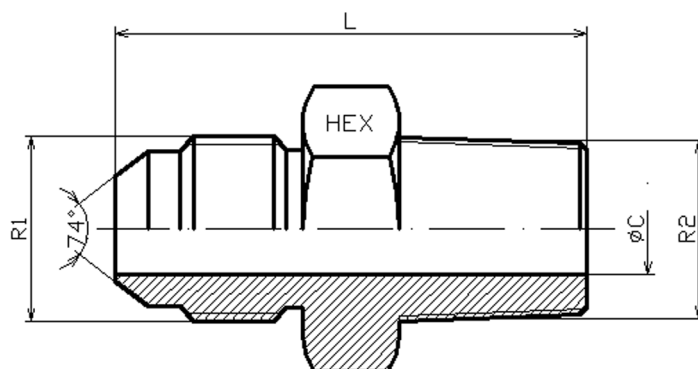
Adapter Male SAE - JIC 37° - Male BSP

Adaptateur Mâle SAE JIC 37° x Mâle BSP

Gerade Einschraubverschraubung AGJ - AGR



Referencia <i>Référence</i> Part N°. Bestell N°.	Rosca <i>Filetage</i> Thread Gewinde		Rosca <i>Filetage</i> Thread Gewinde	Tube <i>Tube</i> Pipe Rhor	Dimensiones <i>Dimmensions</i> Dimensions Masszahlen						
	R1		R2	B	L	L1	A	C	D	HEX	JUNTA
ZS2300610	7/16"	20h UNF	1/8"	6	29,5			4		17	7x2
ZS2300613	7/16"	20h UNF	1/4"	6	31,5			4		19	9,92x2,62
ZS2300617	7/16"	20h UNF	3/8"	6	34			4		22	13,94x2,62
ZS2300813	1/2"	20h UNF	1/4"	8	31,8			5,5		19	9,92x2,62
ZS2300817	1/2"	20h UNF	3/8"	8	33			5		22	13,94x2,62
ZS2301013	9/16"	18h UNF	1/4"	10	32			7		19	9,92x2,62
ZS2301017	9/16"	18h UNF	3/8"	10	34,5			7,5		22	13,94x2,62
ZS2301021	9/16"	18h UNF	1/2"	10	38,5			7		30	17,12x2,62
ZS2301213	3/4"	16h UNF	1/4"	12	36,7			10		22	9,92x2,62
ZS2301217	3/4"	16h UNF	3/8"	12	37,7			10		22	13,94x2,62
ZS2301221	3/4"	16h UNF	1/2"	12	39,5			9,5		27	17,12x2,62
ZS2301226	3/4"	16h UNF	3/4"	12	45			10		36	22,22x2,62
ZS2301617	7/8"	14h UNF	3/8"	14,15,16	42			8		27	13,94x2,62
ZS2301621	7/8"	14h UNF	1/2"	14,15,16	43			12		27	17,12x2,62
ZS2302021	1" 1/16	12h UNF	1/2"	18, 20	49			11		32	17,12x2,62
ZS2302026	1" 1/16	12h UNF	3/4"	18, 20	50			15		32	22,22x2,62
ZS2302033	1" 1/16	12h UNF	1"	18, 20	53			15		46	29,74x3,53
ZS2302526	1" 5/16	12h UNF	3/4"	25	51			20		36	22,22x2,62
ZS2302533	1" 5/16	12h UNF	1"	25	54			21		46	29,74x3,53
ZS2302542	1" 5/16	12h UNF	1" 1/4	25	59			22		50	37,69x3,53
ZS2303242	1" 5/8	12h UNF	1" 1/4	30, 32	60			26		50	37,69x3,53
ZS2303848	1" 7/8	12h UNF	1" 1/2	38	66,5			33		60	42,86x3,53

**Adaptador Macho SAE - JIC 37° -
Macho BSPT (Cónico)**
*Adapter Male SAE - JIC 37° -
Male BSPT (Tapered)*
Adaptateur Mâle SAE JIC 37° x Mâle BSPT
*Gerade Einschraubverschraubung
AGJ - AGR Kegel*


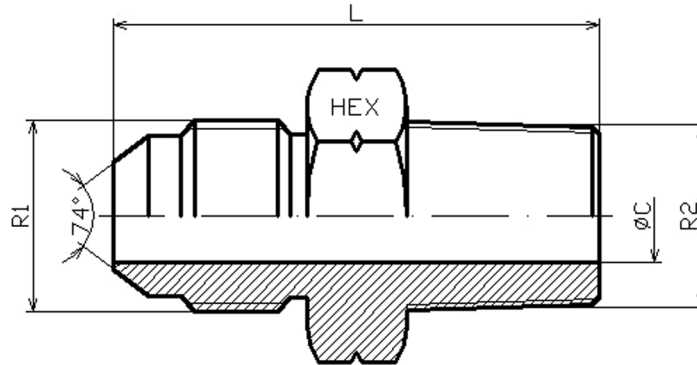
Referencia <i>Référence</i> Part N°. Bestell N°.	Rosca <i>Filetage</i> Thread Gewinde		Rosca <i>Filetage</i> Thread Gewinde		Tube <i>Pipe</i> Pipe Rhor	Dimensiones <i>Dimmensions</i> Dimensions Masszahlen				
	R1	R2	B	L	L1	A	C	D	HEX	
ZS2100610	7/16"	20h UNF	1/8"	BSPT	6	30		4	14	
ZS2100613	7/16"	20h UNF	1/4"	BSPT	6	34,5		4	14	
ZS2100810	1/2"	20h UNF	1/8"	BSPT	8	29,5		4	14	
ZS2100813	1/2"	20h UNF	1/4"	BSPT	8	34,5		5	14	
ZS2101013	9/16"	18h UNF	1/4"	BSPT	10	35		7	17	
ZS2101017	9/16"	18h UNF	3/8"	BSPT	10	34		7,5	19	
ZS2101021	9/16"	18h UNF	1/2"	BSPT	10	42,6		7	22	
ZS2101213	3/4"	16h UNF	1/4"	BSPT	12	39		10	22	
ZS2101217	3/4"	16h UNF	3/8"	BSPT	12	37		10	22	
ZS2101221	3/4"	16h UNF	1/2"	BSPT	12	45		10	22	
ZS2101617	7/8"	14h UNF	3/8"	BSPT	14,15,16	39,5		8	24	
ZS2101621	7/8"	14h UNF	1/2"	BSPT	14,15,16	42		12	24	
ZS2101626	7/8"	14h UNF	3/4"	BSPT	14,15,16	49		12	27	
ZS2102021	1" 1/16	12h UNF	1/2"	BSPT	18, 20	51		15	27	
ZS2102026	1" 1/16	12h UNF	3/4"	BSPT	18, 20	52		15	30	
ZS2102033	1" 1/16	12h UNF	1"	BSPT	18, 20	55		15	36	
ZS2102526	1" 5/16	12h UNF	3/4"	BSPT	25	54,5		22	36	
ZS2102533	1" 5/16	12h UNF	1"	BSPT	25	58,5		22	36	
ZS2103242	1" 5/8	12h UNF	1" 1/4	BSPT	30, 32	60,5		27,5	46	
ZS2103848	1" 7/8	12h UNF	1" 1/2	BSPT	38	64,5		33	50	

Adaptador Macho SAE - JIC 37° - Macho NPT

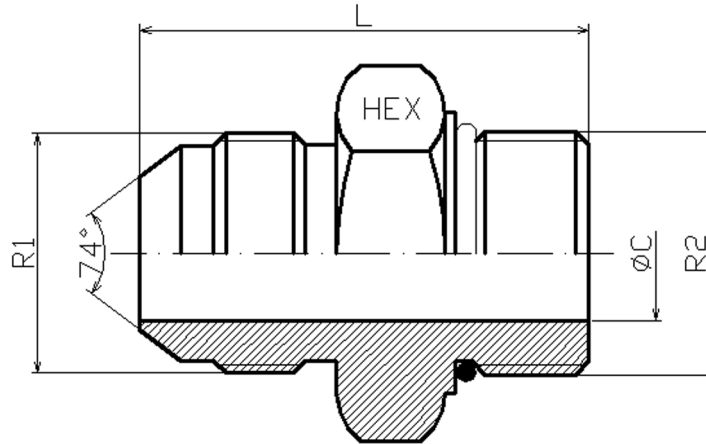
Adapter Male SAE - JIC 37° - Male NPT

*Adapteur Mâle SAE JIC 37° x
Mâle NPT (Briggs)*

Gerade Einschraubverschraubung AGJ - AGN



Referencia <i>Référence</i> Part N°. Bestell N°.	Rosca <i>Filetage</i> Thread Gewinde	Rosca <i>Filetage</i> Thread Gewinde	Tubo <i>Tube</i> Pipe Rhor	Dimensiones <i>Dimmensions</i> Dimensions Masszahlen					
	R1	R2	B	L	L1	A	C	D	HEX
ZS2000610	7/16"	20h UNF	1/8" NPT	6	31		4		14
ZS2000613	7/16"	20h UNF	1/4" NPT	6	35		4		17
ZS2000813	1/2"	20h UNF	1/4" NPT	8	35		5,5		17
ZS2001010	9/16"	18h UNF	1/8" NPT	10	33,4		7,5		19
ZS2001013	9/16"	18h UNF	1/4" NPT	10	36,5		7		19
ZS2001017	9/16"	18h UNF	3/8" NPT	10	34		7,5		19
ZS2001217	3/4"	16h UNF	3/8" NPT	12	40,5		10		22
ZS2001221	3/4"	16h UNF	1/2" NPT	12	45		10		22
ZS2001226	3/4"	16h UNF	3/4" NPT	12	48		10		27
ZS2001621	7/8"	14h UNF	1/2" NPT	14,15,16	45,5		12		24
ZS2001626	7/8"	14h UNF	3/4" NPT	14,15,16	49,5		12		27
ZS2002021	1" 1/16	12h UNF	1/2" NPT	18, 20	50,5		15		27
ZS2002026	1" 1/16	12h UNF	3/4" NPT	18, 20	52		15		30
ZS2002033	1" 1/16	12h UNF	1" NPT	18, 20	58		15		36
ZS2002526	1" 5/16	12h UNF	3/4" NPT	25	54		20		36
ZS2002533	1" 5/16	12h UNF	1" NPT	25	59		22		36
ZS2003242	1" 5/8	12h UNF	1" 1/4" NPT	30, 32	63		26		46
ZS2003848	1" 7/8	12h UNF	1" 1/2" NPT	38	68		33		50

Racor Macho JIC 37° - Macho Métrico*Adapter Male JIC 37° - Metric Male**Adaptateur Mâle JIC 37° x Mâle Métrique**Gerade Einschraubverschraubung JIC*

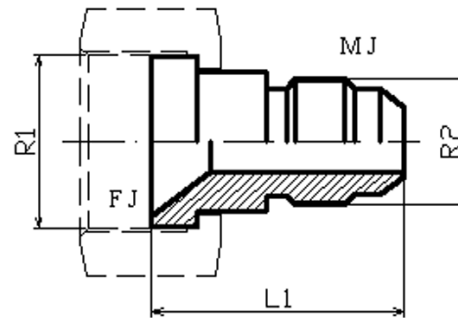
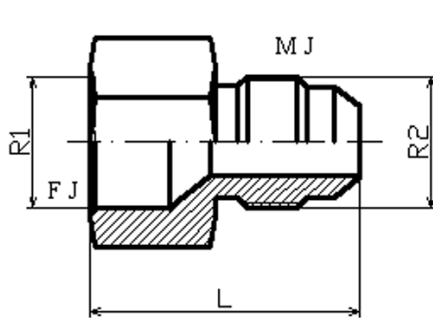
Referencia <i>Référence</i> Part N°. Bestell N°.	Rosca <i>Filetage</i> Thread Gewinde	Rosca <i>Filetage</i> Thread Gewinde	Tube <i>Tube</i> Pipe Rhor	Dimensiones <i>Dimmensions</i> Dimensions Masszahlen					
	R1	R2	B	L	L1	A	C	D	HEX
ZS2400610	7/16"	20h UNF	M 10x1	30			4		17
ZS2400812	1/2"	20h UNF	M 12x1,5	33			6		19
ZS2401014	9/16"	18h UNF	M 14x1,5	34			5		19
ZS2401216	3/4"	16h UNF	M 16x1,5	38			8		22
ZS2401218	3/4"	16h UNF	M 18x1,5	39			9,5		22
ZS2401418	7/8"	14h UNF	M 18x1,6	40			12		24
ZS2401622	7/8"	14h UNF	M 22x1,5	44,5			11		27
ZS2402022	1" 1/16	12h UNF	M 22x1,6	50			12		32
ZS2402027	1" 1/16	12h UNF	M 27x2	50			15		36
ZS2402533	1" 5/16	12h UNF	M 33x2	55,5			20		41
ZS2403242	1" 5/8	12h UNF	M 42x2	60			27,5		50
ZS2403850	1" 7/8	12h UNF	M 50x2	67			33		60

**Adaptador Macho SAE - JIC 37° -
Hembra Fija BSP**

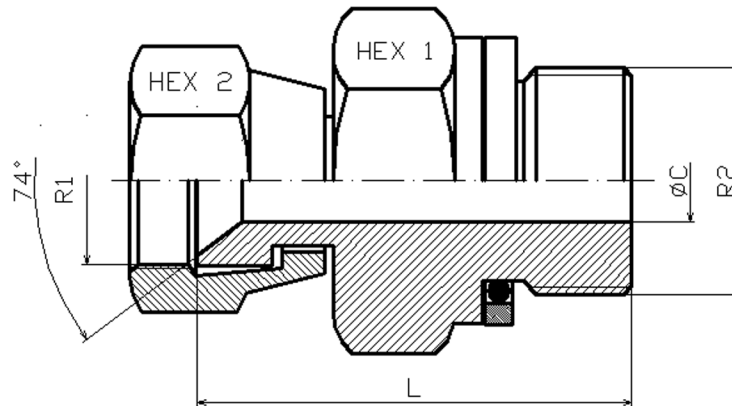
*Adapter Male SAE - JIC 37° -
BSP Fixed Female*

Adapetur Mâle SAE JIC 37° - Femelle Gaz Cyl

SAE Doppelnippel-JIC 37°-BSP Weiblich



Referencia <i>Référence Part N°. Bestell N°.</i>	Rosca <i>Filetage Thread Gewinde</i>	Rosca <i>Filetage Thread Gewinde</i>	Tube <i>Tube Pipe Rhor</i>	Dimensiones <i>Dimmensions Dimensions Masszahlen</i>		
	R1	R2	B	L	L1	HEX
ZS2901006	9/16" 18h UNF	7/16" 20h UNF	10-6		24,8	19
ZS2901008	9/16" 18h UNF	1/2" 20h UNF	10-8	29		19
ZS2901206	3/4" 16h UNF	7/16" 20h UNF	12-6		25,5	22
ZS2901208	3/4" 16h UNF	1/2" 20h UNF	12-8		25,5	22
ZS2901210	3/4" 16h UNF	9/16" 18h UNF	12-10		25,5	22
ZS2901610	7/8" 14h UNF	9/16" 18h UNF	14/15/16-10		26	27
ZS2901612	7/8" 14h UNF	3/4" 16h UNF	14/15/16-12	35,5		27
ZS2902010	1" 1/16 12h UNF	9/16" 18h UNF	18/20-10		27,5	32
ZS2902012	1" 1/16 12h UNF	3/4" 16h UNF	18/20-12		29,7	32
ZS2902520	1" 5/16 12h UNF	1" 1/16 12h UNF	25-20		37,4	41
ZS2903225	1" 5/8 12h UNF	1" 5/16 12h UNF	32-25		40	50
ZS2903832	1" 7/8 12h UNF	1" 5/8 12h UNF	38-32		41,3	60

**Adaptador Hembra Gir. SAE - JIC 37° -
Macho BSP**
*Adapter Swivel Female SAE - JIC 37° -
Male BSP*
*Adaptateur Tournant SAE JIC 37° -
Mâle Gaz Cyl. Equipé*
Übergangsstück DKJ - AGR


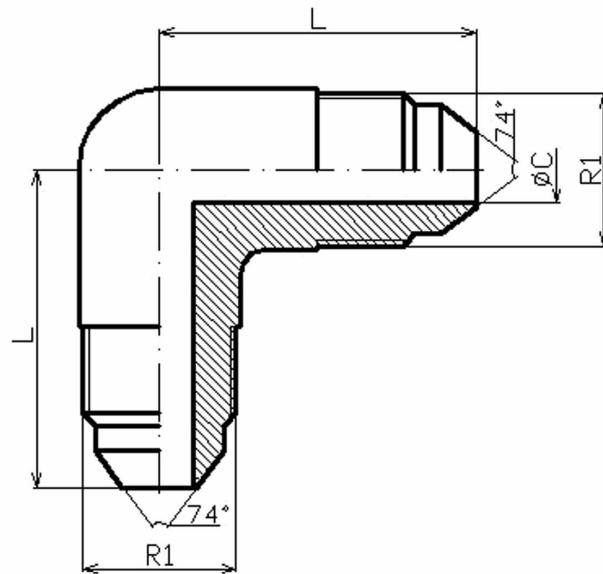
Referencia <i>Référence</i> Part N°. Bestell N°.	Rosca <i>Filetage</i> Thread Gewinde	Rosca <i>Filetage</i> Thread Gewinde	Tubo <i>Tube</i> Pipe Rhor	Dimensiones <i>Dimmensions</i> Dimensions Masszahlen						
	R1	R2	B	L	L1	A	C	HEX1	HEX2	JUNTA
ZS1800610	7/16" 20h UNF	1/8"	6	24			4	14	14	7x2
ZS1800813	1/2" 20h UNF	1/4"	8	29,5			4	19	17	9,92x2,62
ZS1801013	9/16" 18h UNF	1/4"	10	30			6	19	19	9,92x2,62
ZS1801017	9/16" 18h UNF	3/8"	10	32,5			6	22	19	13,94x2,62
ZS1801021	9/16" 18h UNF	1/2"	10	34			6	27	19	17,12x2,62
ZS1801217	3/4" 16h UNF	3/8"	12	31			10	22	22	13,94x2,62
ZS1801621	7/8" 14h UNF	1/2"	14,15,16	36,7			10	27	27	17,12x2,62
ZS1802026	1" 1/16 12h UNF	1/2"	18, 20	41			15	36	32	22,22x2,62
ZS1802533	1" 5/16 12h UNF	1"	25	45			20	46	41	29,74x3,53
ZS1803242	1" 5/8 12h UNF	1" 1/4	30, 32	52			26	50	50	37,69x3,53
ZS1803848	1" 7/8 12h UNF	1" 1/2	38	61,5			32,5	55	55	42,86x3,53

Codo 90° Macho - Macho SAE - JIC 37° Forja

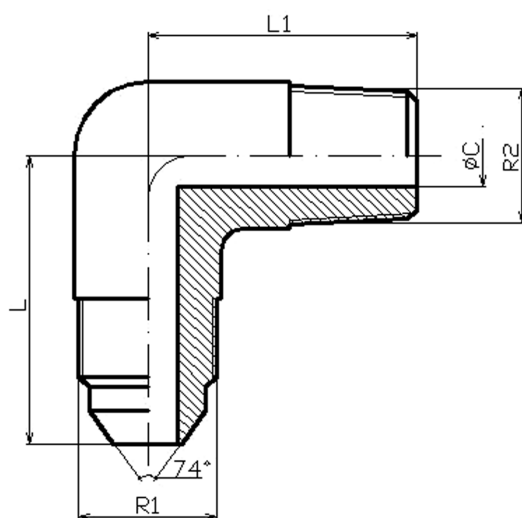
Forging SAE - JIC 37° Male Elbow 90°

CoUDE 90° Mâle SAE JIC 37° Forge

90° Bogen AGJ - AGJ



Referencia <i>Référence</i> Part N°. Bestell N°.	Rosca <i>Filetage</i> Thread Gewinde	Tubo <i>Tube</i> Pipe Rhor	Dimensiones <i>Dimmensions</i> Dimensions Masszahlen					
	R1	B	L	L2	A	C	D	HEX
ZS50006	7/16"	20h UNF	6	22,5		4		
ZS50008	1/2"	20h UNF	8	24		6		
ZS50010	9/16"	18h UNF	10	27		7,5		
ZS50012	3/4"	16h UNF	12	32		10		
ZS50016	7/8"	14h UNF	14,15,16	37		12		
ZS50020	1" 1/16	12h UNF	18, 20	42		15,5		
ZS50025	1" 5/16	12h UNF	25	46		21,5		
ZS50032	1" 5/8	12h UNF	30, 32	52,5		27,5		
ZS50038	1" 7/8	12h UNF	38	59		33		

**Codo 90° Macho SAE - JIC 37° -
Macho BSPT Forja**
*Forging SAE - JIC 37° Male -
BSPT Male Elbow 90°*
*Coude 90° Mâle SAE JIC 37° -
Mâle Gaz Conique (BSPT) Forge*
90° Bogen AGJ - AGR Kegel


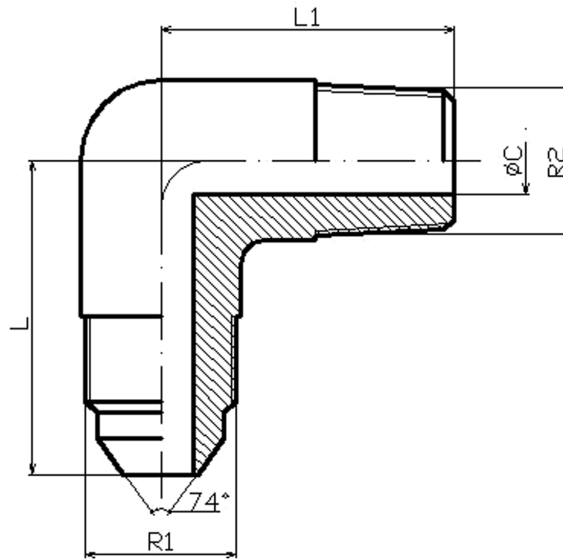
Referencia <i>Référence</i> Part N°. Bestell N°.	Rosca <i>Filetage</i> Thread Gewinde	Tubo <i>Tube</i> Pipe Rhor	Dimensiones <i>Dimmensions</i> Dimensions Masszahlen						
	R1	B	R2	L	L1	A	C	D	HEX
ZS5500610	7/16" 20h UNF	6	1/8"	BSPT	22,5	26	4		
ZS5500613	7/16" 20h UNF	6	1/4"	BSPT	22,5	26	4		
ZS5500810	1/2" 20h UNF	8	1/8"	BSPT	24	26	6		
ZS5500813	1/2" 20h UNF	8	1/4"	BSPT	24	26	6		
ZS5501013	9/16" 18h UNF	10	1/4"	BSPT	27	31	7,5		
ZS5501017	9/16" 18h UNF	10	3/8"	BSPT	27	31	7,5		
ZS5501021	9/16" 18h UNF	10	1/2"	BSPT	27	31	7,5		
ZS5501213	3/4" 16h UNF	12	1/4"	BSPT	32	34	10		
ZS5501217	3/4" 16h UNF	12	3/8"	BSPT	32	34	10		
ZS5501221	3/4" 16h UNF	12	1/2"	BSPT	32	34	10		
ZS5501617	7/8" 14h UNF	14,15,16	3/8"	BSPT	37	35	12		
ZS5501621	7/8" 14h UNF	14,15,16	1/2"	BSPT	37	35	12		
ZS5501626	7/8" 14h UNF	14,15,16	3/4"	BSPT	37	35	12		
ZS5502021	1" 1/16 12h UNF	18, 20	1/2"	BSPT	42	45	15,5		
ZS5502026	1" 1/16 12h UNF	18, 20	3/4"	BSPT	42	45	15,5		
ZS5502526	1" 5/16 12h UNF	25	3/4"	BSPT	-	-	-		
ZS5502533	1" 5/16 12h UNF	25	1"	BSPT	-	-	-		
ZS5503233	1" 5/8 12h UNF	30, 32	1"	BSPT	-	-	-		
ZS5503242	1" 5/8 12h UNF	30, 32	1" 1/4	BSPT	-	-	-		
ZS5503848	1" 7/8 12h UNF	38	1" 1/2	BSPT	-	-	-		

**Codo 90° Macho SAE - JIC 37° -
Macho NPT Forja**

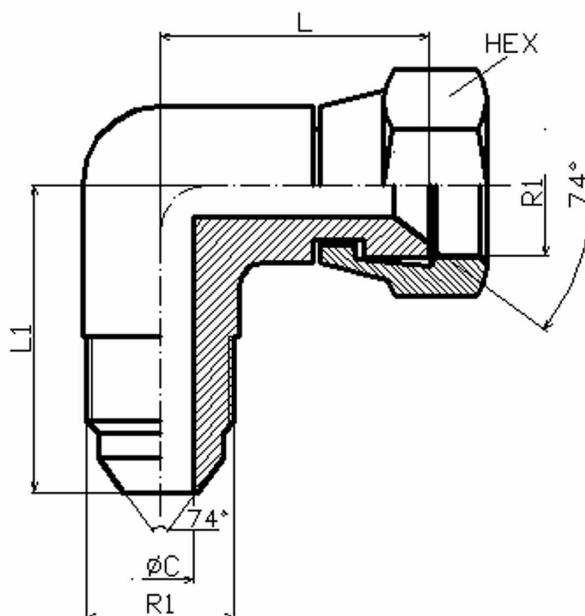
*Forging SAE - JIC 37° Male -
NPT Male Elbow 90°*

*Coude 90° Mâle SAE JIC 37° -
Mâle NPT (Briggs) Forge*

90° Bogen AGJ - AGN



Referencia <i>Référence Part N°. Bestell N°.</i>	Rosca <i>Filetage Thread Gewinde</i>	Tubo <i>Tube Pipe Rhor</i>	Dimensiones <i>Dimmensions Dimensions Masszahlen</i>							
			R1	B	R2	L	L1	A	C	HEX
ZS5250610	7/16" 20h UNF	6	1/8"	NPT	22,5	26			4	
ZS5250613	7/16" 20h UNF	6	1/4"	NPT	22,5	26			4	
ZS5250810	1/2" 20h UNF	8	1/8"	NPT	24	26			6	
ZS5250813	1/2" 20h UNF	8	1/4"	NPT	24	26			6	
ZS5251013	9/16" 18h UNF	10	1/4"	NPT	27	32			7,5	
ZS5251017	9/16" 18h UNF	10	3/8"	NPT	27	32			7,5	
ZS5251021	9/16" 18h UNF	10	1/2"	NPT	27	32			7,5	
ZS5251213	3/4" 16h UNF	12	1/4"	NPT	32	34			10	
ZS5251217	3/4" 16h UNF	12	3/8"	NPT	32	34			10	
ZS5251221	3/4" 16h UNF	12	1/2"	NPT	32	34			10	
ZS5251617	7/8" 14h UNF	14,15,16	3/8"	NPT	37	35			12	
ZS5251621	7/8" 14h UNF	14,15,16	1/2"	NPT	37	35			12	
ZS5251626	7/8" 14h UNF	14,15,16	3/4"	NPT	37	35			12	
ZS5252021	1" 1/16 12h UNF	18, 20	1/2"	NPT	42	45			15,5	
ZS5252026	1" 1/16 12h UNF	18, 20	3/4"	NPT	42	45			15,5	
ZS5252526	1" 5/16 12h UNF	25	3/4"	NPT	-	-			-	
ZS5252533	1" 5/16 12h UNF	25	1"	NPT	-	-			-	
ZS5253233	1" 5/8 12h UNF	30, 32	1"	NPT	-	-			-	
ZS5253242	1" 5/8 12h UNF	30, 32	1" 1/4	NPT	-	-			-	
ZS5253848	1" 7/8 12h UNF	38	1" 1/2	NPT	-	-			-	

**Codo 90° Macho - Hembra Gir. SAE -
JIC 37° Forja**
*Forging SAE - JIC 37° Male -
Swivel Female Elbow 90°*
*Coude 90° Mâle SAE JIC 37° - Femelle
Tournante JIC 37° Forge*
90° Bogen DKJ - AGJ


Referencia	Rosca	Tube	Dimensiones						
Référence	Filetage	Tube	Dimmensions						
Part N°.	Thread	Pipe	Dimensions						
Bestell N°.	Gewinde	Rhor	Masszahlen						

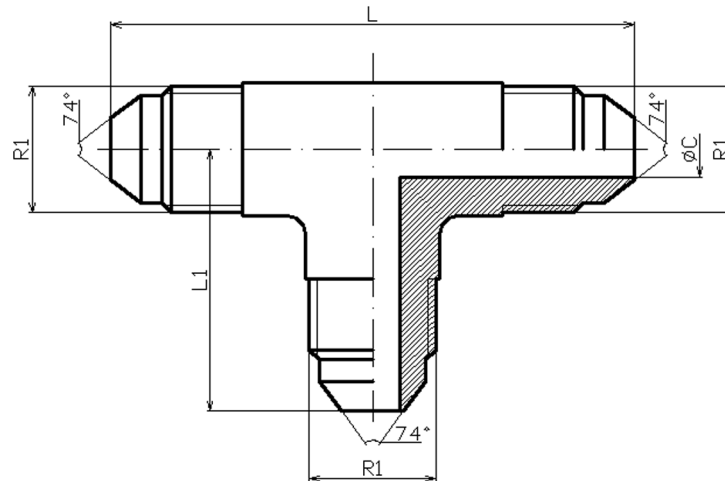
	R1	B	L	L1	L2	A	C	D	HEX
ZS67506	7/16"	20h UNF	6	16,7	22,5		4		14
ZS67508	1/2"	20h UNF	8	17,4	24		6		17
ZS67510	9/16"	18h UNF	10	22,3	27		7,5		19
ZS67512	3/4"	16h UNF	12	24,4	32		10		24
ZS67516	7/8"	14h UNF	14,15,16	28,4	37		12		27
ZS67520	1" 1/16	12h UNF	18, 20	30,1	42		15,5		32
ZS67525	1" 5/16	12h UNF	25	35,7	46		21,5		41
ZS67532	1" 5/8	12h UNF	30, 32	42,8	52,5		27,5		50
ZS67538	1" 7/8	12h UNF	38	47,2	59		33		55

**“T” Macho - Macho - Macho SAE -
JIC 37° Forja**

Forging SAE - JIC 37° Male “T”

Tés Egaux Mâle SAE JIC 37° Forge

T-Verschraubung AGJ



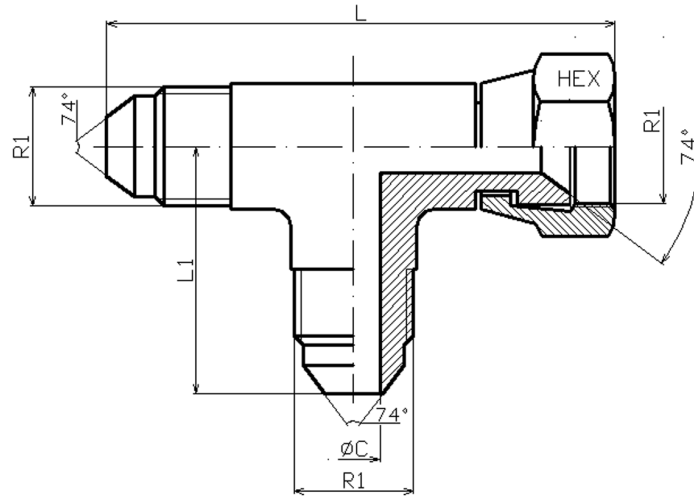
Referencia <i>Référence</i> Part N ^o . Bestell N ^o .	Rosca <i>Filetage</i> Thread Gewinde	Tubo <i>Tube</i> Pipe Rhor	Dimensiones <i>Dimmensions</i> Dimensions Masszahlen								
			R1	B	L	L1	L2	A	C	D	HEX
ZS50506	7/16"	20h UNF	6	45	22,5				4		
ZS50508	1/2"	20h UNF	8	48	24				6		
ZS50510	9/16"	18h UNF	10	54	27				7,5		
ZS50512	3/4"	16h UNF	12	64	32				10		
ZS50516	7/8"	14h UNF	14,15,16	74	37				12		
ZS50520	1" 1/16	12h UNF	18, 20	84	42				15,5		
ZS50525	1" 5/16	12h UNF	25	92	46				21,5		
ZS50532	1" 5/8	12h UNF	30, 32	105	52,5				27,5		
ZS50538	1" 7/8	12h UNF	38	118	59				33		

**“T” Macho - Macho - Hembra Gir. SAE -
JIC 37° Forja**

*Forging SAE - JIC 37° Male - Male -
Swivel Female “T”*

*Tés Egaux Tournante SAE JIC 37°
au Latéral Forge*

*Einstellbare T- Anschluss Verschraubungen
AGJ-AGJ-DKJ*



Referencia	Rosca	Tubo	Dimensiones						
Référence	Filetage	Tube	Dimmensions						
Part N°.	Thread	Pipe	Dimensions						
Bestell N°.	Gewinde	Rhor	Masszahlen						

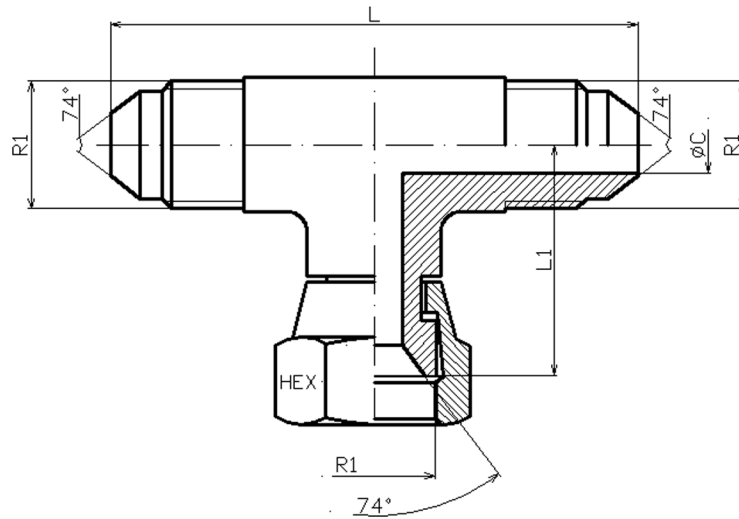
	R1	B	L	L1	L2	A	C	D	HEX
ZS68006	7/16"	20h UNF	6	39,2	22,5		4		14
ZS68008	1/2"	20h UNF	8	41,4	24		6		17
ZS68010	9/16"	18h UNF	10	49,3	27		7,5		19
ZS68012	3/4"	16h UNF	12	56,4	32		10		24
ZS68016	7/8"	14h UNF	14,15,16	65,4	37		12		27
ZS68020	1" 1/16	12h UNF	18, 20	72,1	42		15,5		32
ZS68025	1" 5/16	12h UNF	25	81,7	46		21,5		41
ZS68032	1" 5/8	12h UNF	30, 32	95,3	52,5		27,5		50
ZS68038	1" 7/8	12h UNF	38	106,2	59		33		55

**“T” Macho - Hembra Gir. - Macho SAE -
JIC 37° Forja**

*Forging SAE - JIC 37° Male - Swivel
Female - Male “T”*

*Tés Egaux Tournant SAE JIC 37°
au Centre Forge*

*Einstellbare T- Anschluss Verschraubung
AGJ-DKJ-AGJ*



Referencia <i>Référence Part N°. Bestell N°.</i>	Rosca <i>Filetage Thread Gewinde</i>	Tubo <i>Tube Pipe Rhor</i>	Dimensiones <i>Dimmensions Dimensions Masszahlen</i>						
	R1	B	L	L1	L2	A	C	D	HEX
ZS68506	7/16" 20h UNF	6	45	16,7			4		14
ZS68508	1/2" 20h UNF	8	48	17,4			6		17
ZS68510	9/16" 18h UNF	10	54	22,3			7,5		19
ZS68512	3/4" 16h UNF	12	64	24,4			10		24
ZS68516	7/8" 14h UNF	14,15,16	74	28,4			12		27
ZS68520	1" 1/16 12h UNF	18, 20	84	30,1			15,5		32
ZS68525	1" 5/16 12h UNF	25	92	35,7			21,5		41
ZS68532	1" 5/8 12h UNF	30, 32	105	42,8			27,5		50
ZS68538	1" 7/8 12h UNF	38	118	47,2			33		55